

M/V GO LIBERTY

150 CLASS DP-1 SUPPLY VESSEL



HULL SPECIFICATIONS

Length:	150'
Beam:	36'
Depth:	11"
Draft Max:	10'
Clear Deck:	90' x 30'

CAPACITIES

Deck Cargo:	335 LT
Potable Water:	10,000 usg
Fuel:	43,000 usg / 95,920 usg*
Ballast Water:	52,000 usg
Liquid Mud:	1,260 bbls
Methanol:	N/A

*Fuel capacity when utilizing Liquid Mud tanks

PROPULSION

Main Engines:	2 x CAT 3508
Total HP:	1,700 HP @1200 RPM
Reduction Gears:	Twin Disc
Generators:	2 x 150kW. 480vt
Bow Thruster:	Diesel Driven, 300 HP CAT
Rudders:	N/A

ACCOMMODATIONS

Certified to Carry:	20
Cabins / Berths:	6 / 20
Walk in Cooler:	Yes
Walk in Freezer:	Yes

ELECTRONICS

Radars:	2 x Furuno
Auto Pilot:	Yes
GPS (Navigation):	2 x Furuno
Echo Sounder:	Yes
VHF Radios:	3 x VHF
Dynamic Positioning:	Kongsberg
DP Reference System:	DGPS
Electronic Plotter:	Yes
Sat Communication:	Vsat / Direct TV
GMDSS:	N/A

SPECIAL EQUIPMENT

Fire Monitor	Yes
--------------	-----

DOCUMENTATION

US Flag:	USCG, ON 1207386
Class:	ABS Loadline, USCG International Service, Sub "L" and "I"
EEP:	75 Persons
Builder:	Master Boats
Delivery Date:	2008

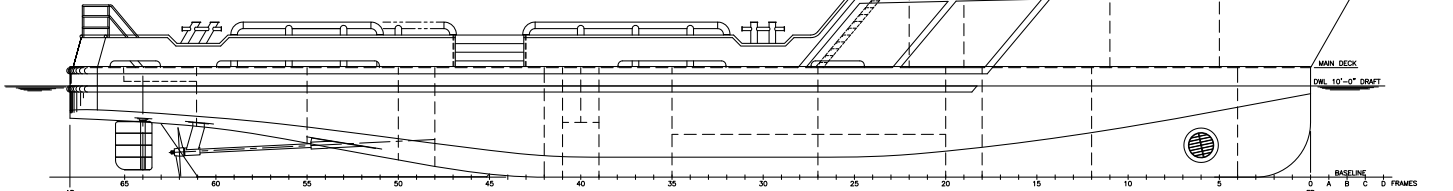
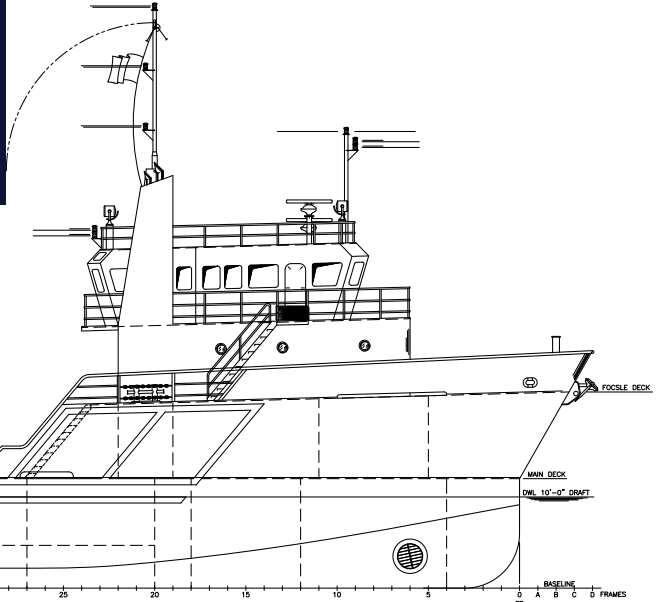


Ryan Marine Inc.

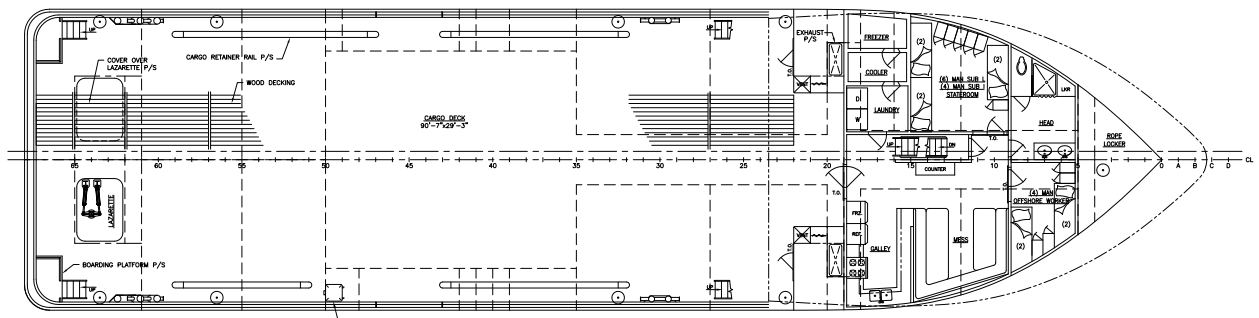
N41°31,48'W70°40.25'

M/V GO LIBERTY

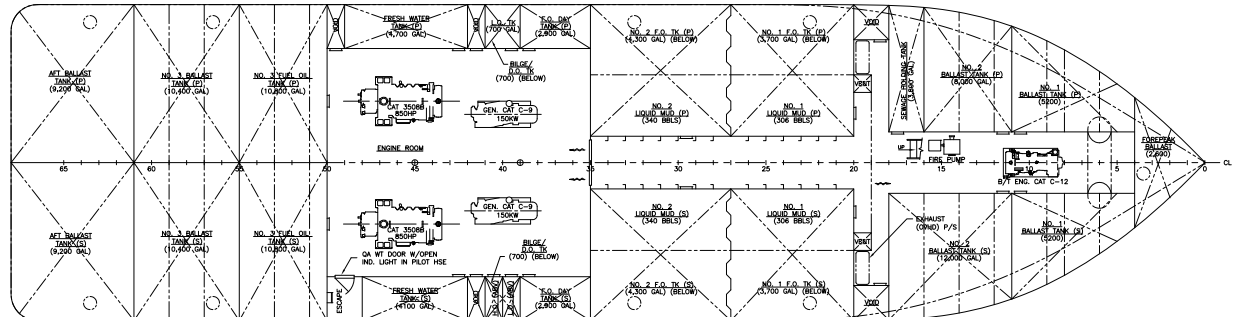
150 CLASS DP-1 SUPPLY VESSEL



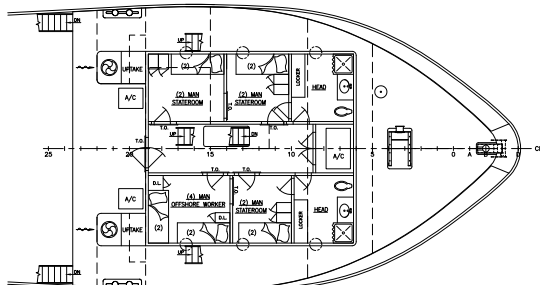
OUTBOARD PROFILE



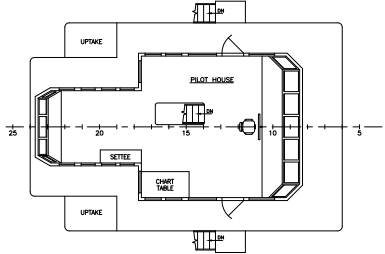
MAIN DECK



HOLD PLAN



FOCSLE DECK



BRIDGE DECK